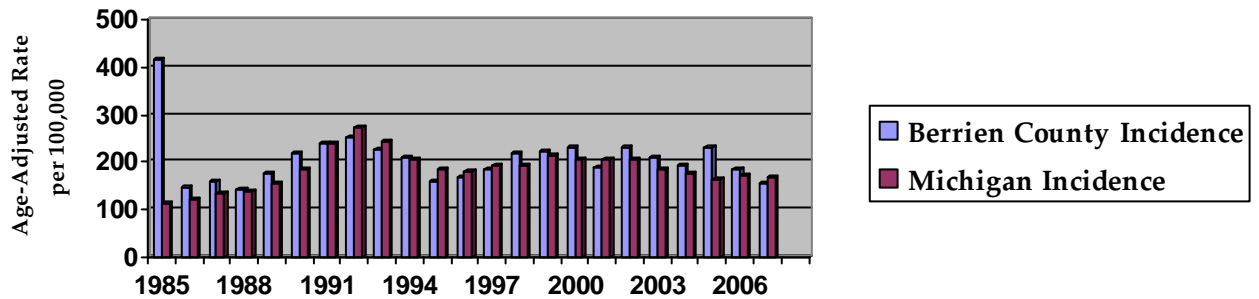


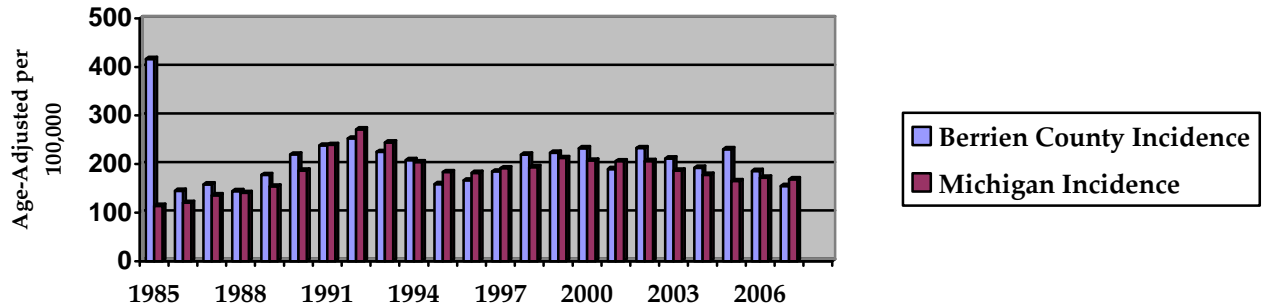
## Invasive Prostate Cancer Incidence and Mortality Trends Berrien County Male Residents, 1985-2008

| Year of Diagnosis or Death | Cases Diagnosed |                   |               | Deaths |                   |               |
|----------------------------|-----------------|-------------------|---------------|--------|-------------------|---------------|
|                            | Number          | Age-Adjusted Rate | Michigan Rate | Number | Age-Adjusted Rate | Michigan Rate |
| 1985                       | 97              | 416.2 ±27.3       | 114.1         | 20     | 34.7 ±11.1        | 34.5          |
| 1986                       | 92              | 145.2 ±25.3       | 120.2         | 16     | *                 | 36.2          |
| 1987                       | 108             | 158.2 ±27.9       | 135.6         | 25     | 45.0 ±14.0        | 38.1          |
| 1988                       | 97              | 144.2 ±25.9       | 140.7         | 22     | 36.1 ±12.9        | 36.9          |
| 1989                       | 118             | 177.6 ±28.1       | 153.8         | 26     | 43.3 ±13.8        | 38.3          |
| 1990                       | 152             | 219.8 ±31.8       | 186.6         | 27     | 43.4 ±12.8        | 38.2          |
| 1991                       | 164             | 238.1 ±31.5       | 239.4         | 22     | 36.9 ±12.4        | 41.1          |
| 1992                       | 180             | 252.6 ±33.7       | 271.5         | 25     | 40.0 ±13.6        | 42.4          |
| 1993                       | 154             | 225.0 ±30.3       | 244.6         | 28     | 44.4 ±13.2        | 42.7          |
| 1994                       | 157             | 208.4 ±30.7       | 204.0         | 27     | 44.2 ±12.7        | 38.2          |
| 1995                       | 118             | 158.6 ±26.5       | 183.6         | 28     | 45.6 ±11.8        | 38.6          |
| 1996                       | 124             | 166.3 ±27.4       | 181.9         | 26     | 39.5 ±12.0        | 36.7          |
| 1997                       | 142             | 184.8 ±29.0       | 191.3         | 19     | *                 | 37.5          |
| 1998                       | 160             | 219.3 ±30.0       | 193.9         | 14     | *                 | 33.3          |
| 1999                       | 172             | 223.5 ±31.3       | 212.4         | 15     | *                 | 33.0          |
| 2000                       | 185             | 232.7 ±30.9       | 207.3         | 21     | 28.5 ±11.2        | 31.3          |
| 2001                       | 157             | 189.9 ±28.8       | 205.9         | 24     | 33.8 ±10.4        | 30.5          |
| 2002                       | 191             | 232.8 ±31.4       | 206.4         | 22     | 30.5 ±9.8         | 27.2          |
| 2003                       | 174             | 211.7 ±293.7      | 186.3         | 8      | *                 | 25.5          |
| 2004                       | 163             | 192.3 ±28.0       | 178.0         | 16     | *                 | 24.3          |
| 2005                       | 194             | 230.8 ±30.8       | 165.1         | 15     | *                 | 22.7          |
| 2006                       | 160             | 185.9 ±27.5       | 171.8         | 11     | *                 | 22.3          |
| 2007                       | 135             | 154.7 ±24.8       | 168.7         | 11     | *                 | 22.9          |
| 2008                       | ---             | ---               | ---           | 20     | 24.7 ±9.5         | 21.9          |

### Invasive Prostate Cancer Incidence, Berrien County Residents 1985-2008



### Invasive Prostate Cancer Deaths, Berrien County Residents 1985-2008



**Notes:**

**Age-Adjusted Rates** are per 100,000 male population. Age-adjusted rates are computed by the direct method, using as the standard population the age distribution of the total population of the United States for the year 2000. Adding and subtracting the number shown after the ± symbol from the rate creates a confidence interval indicating that the true rate lies between the lower and upper bounds of this interval with 95 % statistical confidence. Underlying causes of death for 1985-1998 were classified in accordance with the Ninth Revision of the International Classification of Diseases (ICD-9). Beginning with 1999, causes of death were classified using ICD-10. Because the comparability between classifications for cancer deaths is high, the change should have little or no impact on comparisons of mortality statistics over time.

\* : A rate is not calculated when there are fewer than 20 events, because the width of the confidence interval would negate any usefulness for comparative purposes.

---: Not available.

**Case:** A case is defined as a person with any newly diagnosed cancer with a behavior code of 3 (malignant primary site). Both in-situ and invasive urinary bladder cancer cases are included, in order to be consistent with SEER tabulations from the National Cancer Institute.

**Source of Michigan Cases Diagnosed:** Michigan Resident Cancer Incidence File. Updated with cases processed through December 30, 2009. Division for Vital Records & Health Statistics, Michigan Department of Community Health.

**Source of Michigan Death Data:** 1985 - 2008 Michigan Resident Death Files, Division for Vital Records & Health Statistics, Michigan Department of Community Health.

**Source of National SEER and Death Data:** SEER Cancer Statistics Review, 1975 - 2007, National Cancer Institute, Bethesda, MD, 2010.

**Last Updated:** August 2, 2010.

For more information, please contact  
The Epidemiologist at 269.927.5639.