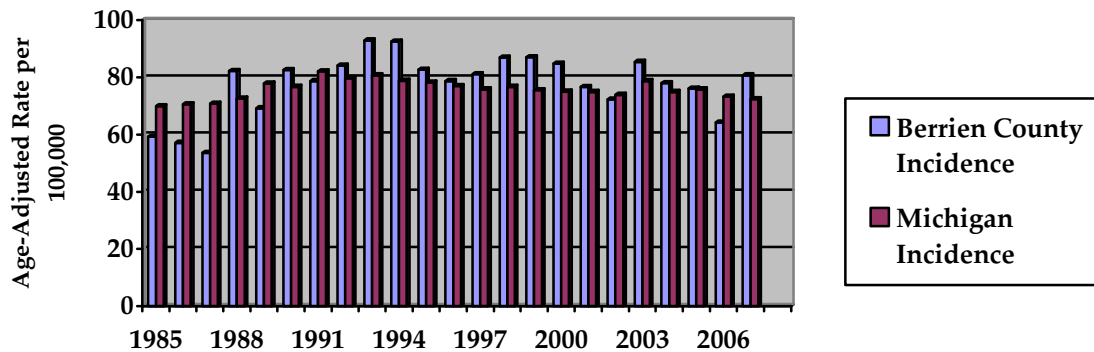


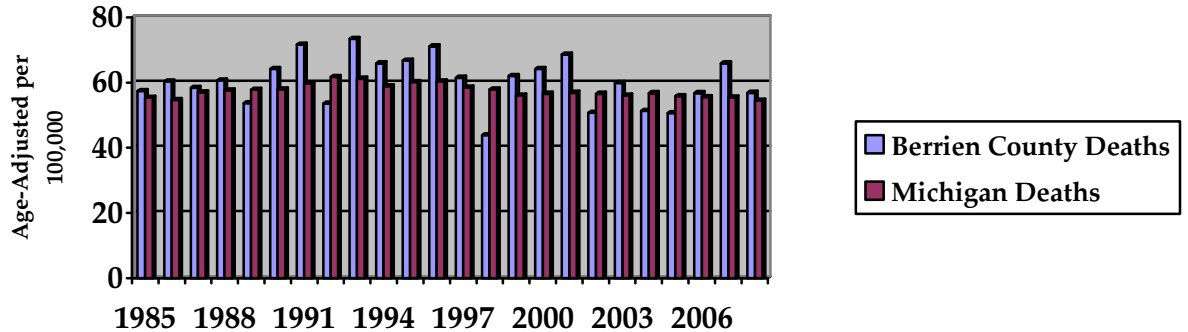
Invasive Lung Cancer and Mortality Trends Berrien County Health Department District Residents, 1985-2008

Year of Diagnosis or Death	Cases Diagnosed			Deaths		
	Number	Age-Adjusted Rate	Michigan Rate	Number	Age-Adjusted Rate	Michigan Rate
1985	98	59.3 ±11.6	69.9	97	57.4 ±11.5	55.4
1986	96	57.1 ±11.5	70.6	96	60.4 ±11.8	54.7
1987	87	53.6 ±11.4	70.8	99	58.4 ±11.4	57.0
1988	138	82.2 ±13.5	72.6	102	60.7 ±11.4	57.6
1989	116	69.2 ±12.5	77.9	88	53.7 ±11.1	57.8
1990	142	82.6 ±13.4	76.7	110	64.2 ±11.6	57.9
1991	132	78.7 ±13.1	82.1	120	71.6 ±12.0	59.7
1992	143	84.1 ±13.3	79.7	96	53.6 ±10.5	61.7
1993	156	92.9 ±14.0	80.7	123	73.4 ±12.4	61.2
1994	159	92.5 ±14.0	78.8	115	65.9 ±11.7	58.9
1995	145	82.7 ±13.1	78.2	117	66.7 ±11.7	60.2
1996	136	78.7 ±12.9	77.0	123	71.1 ±12.2	60.4
1997	139	81.1 ±13.1	75.8	108	61.5 ±11.4	58.5
1998	152	86.9 ±13.3	76.7	77	43.8 ±9.3	57.9
1999	153	87.0 ±13.4	75.5	110	62.0 ±11.4	56.1
2000	154	84.8 ±12.9	75.0	117	64.2 ±11.2	56.6
2001	140	76.6 ±12.2	74.9	126	68.6 ±11.6	56.9
2002	132	72.3 ±11.8	73.9	94	50.8 ±9.9	56.6
2003	160	85.4 ±12.8	78.7	112	59.9 ±10.8	56.1
2004	147	78.0 ±12.3	74.9	99	51.4 ±9.7	56.8
2005	144	76.1 ±12.1	75.8	98	50.7 ±9.5	55.9
2006	124	64.2 ±11.1	73.3	111	56.8 ±10.1	55.6
2007	155	80.7 ±12.4	72.4	128	65.9 ±11.2	55.5
2008	---	---	---	115	56.9 ±10.1	54.5

Invasive Lung Cancer Incidence, Berrien County Residents 1985-2008



**Invasive Lung Cancer Deaths,
Berrien County Residents 1985-2008**



Notes:

Age-Adjusted Rates are per 100,000 population. Age-adjusted rates are computed by the direct method, using as the standard population the age distribution of the total population of the United States for the year 2000. Adding and subtracting the number shown after the ± symbol from the rate creates a confidence interval indicating that the true rate lies between the lower and upper bounds of this interval with 95 % statistical confidence. Underlying causes of death for 1985-1998 were classified in accordance with the Ninth Revision of the International Classification of Diseases (ICD-9). Beginning with 1999, causes of death were classified using ICD-10. Because the comparability between classifications for cancer deaths is high, the change should have little or no impact on comparisons of mortality statistics over time.

---: Not available.

Case: A case is defined as a person with any newly diagnosed cancer with a behavior code of 3 (malignant primary site). Both in-situ and invasive urinary bladder cancer cases are included, in order to be consistent with SEER tabulations from the National Cancer Institute.

Source of Michigan Cases Diagnosed: Michigan Resident Cancer Incidence File. Updated with cases processed through December 30, 2009. Division for Vital Records & Health Statistics, Michigan Department of Community Health.

Source of Michigan Death Data: 1985 - 2008 Michigan Resident Death Files, Division for Vital Records & Health Statistics, Michigan Department of Community Health.

Source of National SEER and Death Data: SEER Cancer Statistics Review, 1975 - 2007, National Cancer Institute, Bethesda, MD, 2010.

Last Updated: August 2, 2010.

For more information, please contact
The Epidemiologist at 269.927.5639.