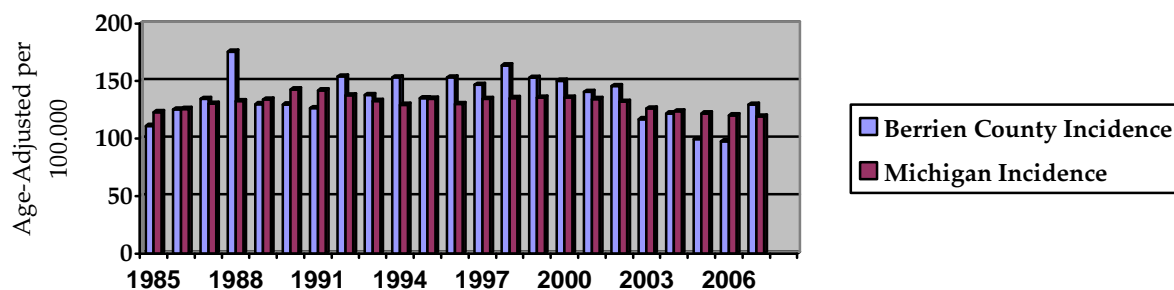


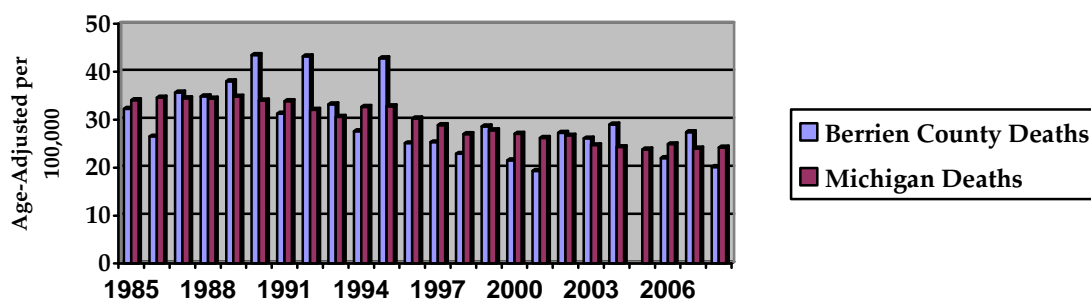
Invasive Breast Cancer Incidence and Mortality Trends Berrien County Female Residents, 1985-2008

Year of Diagnosis or Death	Cases Diagnosed			Deaths		
	Number	Age-Adjusted Rate	Michigan Rate	Number	Age-Adjusted Rate	Michigan Rate
1985	95	111.0 ±22.7	122.9	29	32.3 ±12.0	34.1
1986	107	125.3 ±23.5	125.7	23	26.5 ±10.4	34.6
1987	115	134.4 ±24.7	130.3	30	35.7 ±12.7	34.5
1988	151	175.6 ±28.1	132.4	31	34.9 ±12.2	34.4
1989	118	129.8 ±23.4	133.8	35	38.0 ±11.9	34.8
1990	112	129.6 ±23.8	142.6	40	43.5 ±13.0	34.0
1991	114	126.3 ±23.2	141.8	29	31.3 ±11.1	33.9
1992	140	153.9 ±25.3	137.4	36	43.2 ±13.7	32.1
1993	126	137.7 ±23.5	132.6	30	33.2 ±11.9	30.6
1994	138	153.0 ±25.2	129.3	25	27.6 ±10.7	32.7
1995	123	134.9 ±23.6	134.6	40	42.8 ±12.6	32.8
1996	139	153.0 ±25.3	130.0	25	25.1 ±9.0	30.3
1997	135	146.7 ±24.4	134.4	25	25.3 ±9.8	28.9
1998	151	163.4 ±25.7	135.1	22	22.9 ±9.4	27.0
1999	142	152.7 ±24.8	135.5	28	28.6 ±10.2	27.8
2000	146	150.1 ±23.8	135.6	23	21.5 ±8.2	27.1
2001	138	140.6 ±23.0	134.3	20	19.3 ±7.9	26.2
2002	142	145.6 ±23.7	131.9	28	27.3 ±9.8	26.7
2003	113	116.8 ±21.4	126.1	27	26.1 ±9.7	24.7
2004	119	121.8 ±21.8	123.6	28	29.0 ±10.8	24.3
2005	98	99.4 ±19.7	121.8	17	*	23.8
2006	100	97.6 ±19.0	120.1	24	22.0 ±8.7	24.9
2007	134	129.4 ±21.7	119.2	31	27.4 ±9.3	24.0
2008	---	---	---	23	20.1 ±8.0	24.2

Invasive Breast Cancer Incidence, Berrien County Residents, 1985-2008



Invasive Breast Cancer Deaths, Berrien County Residence, 1985-2008



Notes:

Age-Adjusted Rates are per 100,000 female population. Age-adjusted rates are computed by the direct method, using as the standard population the age distribution of the total population of the United States for the year 2000. Adding and subtracting the number shown after the ± symbol from the rate creates a confidence interval indicating that the true rate lies between the lower and upper bounds of this interval with 95 % statistical confidence. Underlying causes of death for 1985-1998 were classified in accordance with the Ninth Revision of the International Classification of Diseases (ICD-9). Beginning with 1999, causes of death were classified using ICD-10. Because the comparability between classifications for cancer deaths is high, the change should have little or no impact on comparisons of mortality statistics over time.

* : A rate is not calculated when there are fewer than 20 events, because the width of the confidence interval would negate any usefulness for comparative purposes.

---: Not available.

Case: A case is defined as a person with any newly diagnosed cancer with a behavior code of 3 (malignant primary site). Both in-situ and invasive urinary bladder cancer cases are included, in order to be consistent with SEER tabulations from the National Cancer Institute.

Source of Michigan Cases Diagnosed: Michigan Resident Cancer Incidence File. Updated with cases processed through December 30, 2009. Division for Vital Records & Health Statistics, Michigan Department of Community Health.

Source of Michigan Death Data: 1985 - 2008 Michigan Resident Death Files, Division for Vital Records & Health Statistics, Michigan Department of Community Health.

Source of National SEER and Death Data: SEER Cancer Statistics Review, 1975 - 2007, National Cancer Institute, Bethesda, MD, 2010.

Last Updated: August 2, 2010.

For more information, please contact
The Epidemiologist at 269.927.5639.