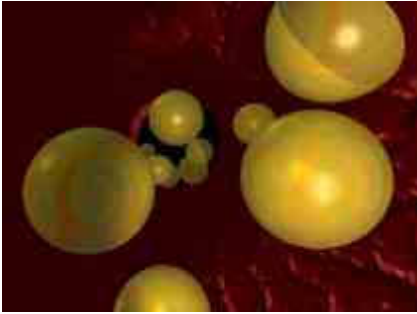
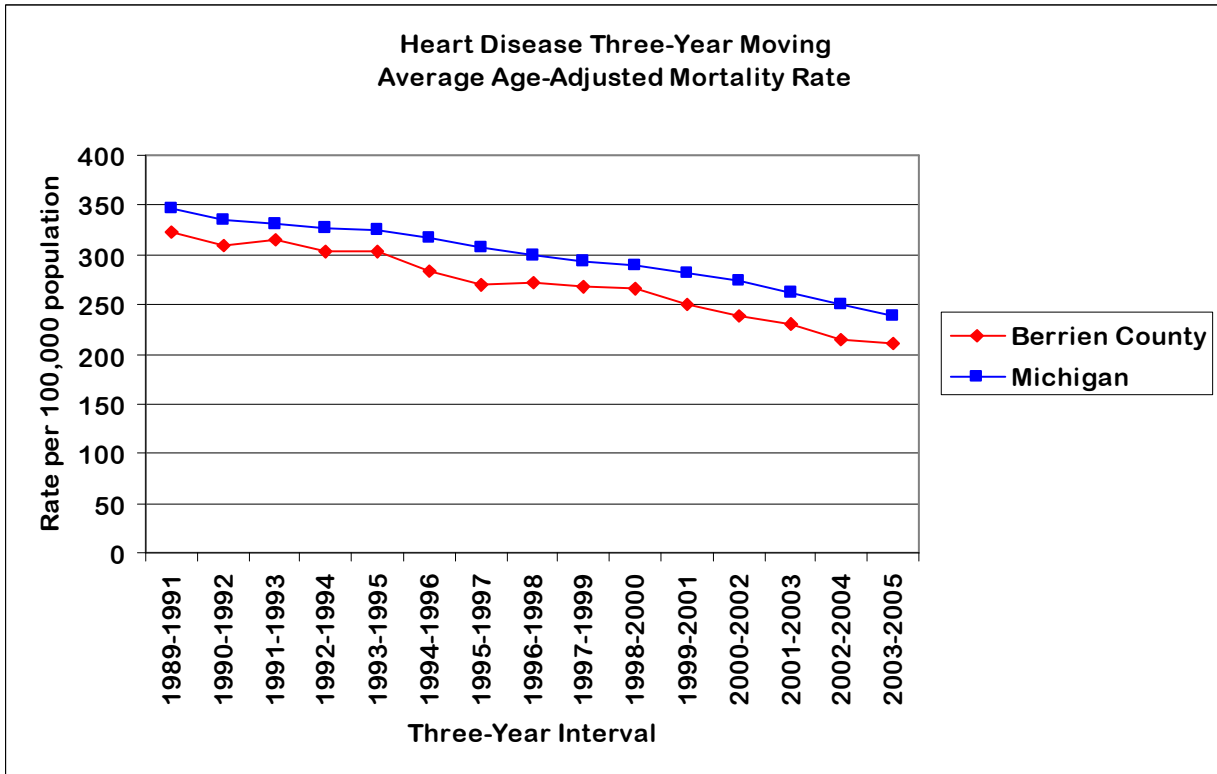


# Heart Disease



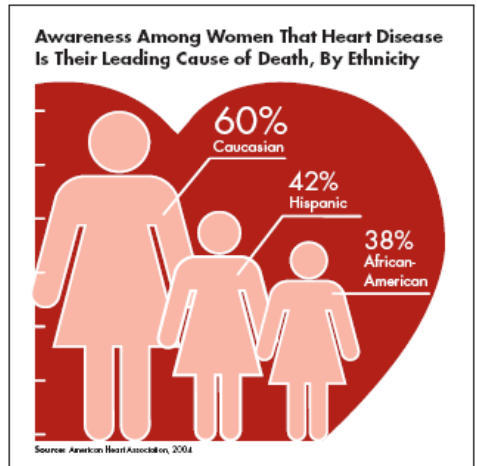
Heart disease was the leading cause of death in 2005 in Berrien County accounting for 25.8% of all deaths. The three-year moving average age adjusted heart disease mortality rate in Berrien County has decreased by 34.9% from 1989-1991 to 2003-2005. Although Berrien County's rate remains lower, Michigan has experienced a decrease of 30.9% in the same time period. Age adjusted mortality rates were higher for males and African Americans than females and whites respectively. Congestive heart failure was the leading diagnosis for preventable hospitalizations from 1998-2003 in Berrien County.

Americans than females and whites respectively. Congestive heart failure was the leading diagnosis for preventable hospitalizations from 1998-2003 in Berrien County.

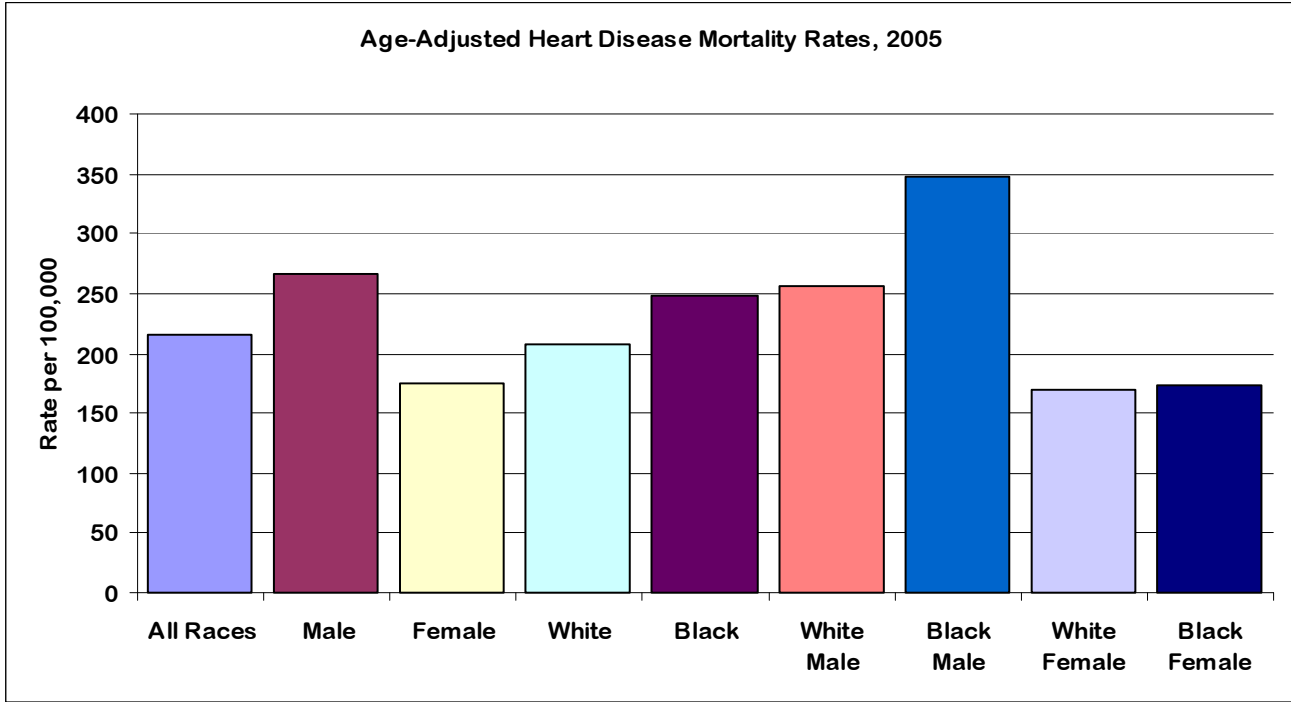


Source: MDCH Michigan Resident Death Files

For more information on how to prevent heart disease, please click [here](#).



# Heart Disease



Source: MDCH Michigan Resident Death Files



Last updated July 10, 2007.

For more information, please contact the Epidemiologist at 269-927-5639.