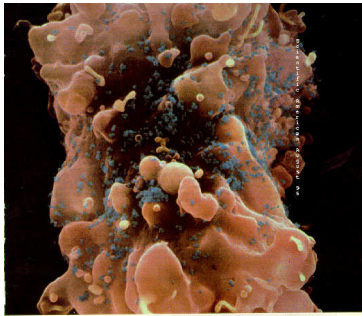


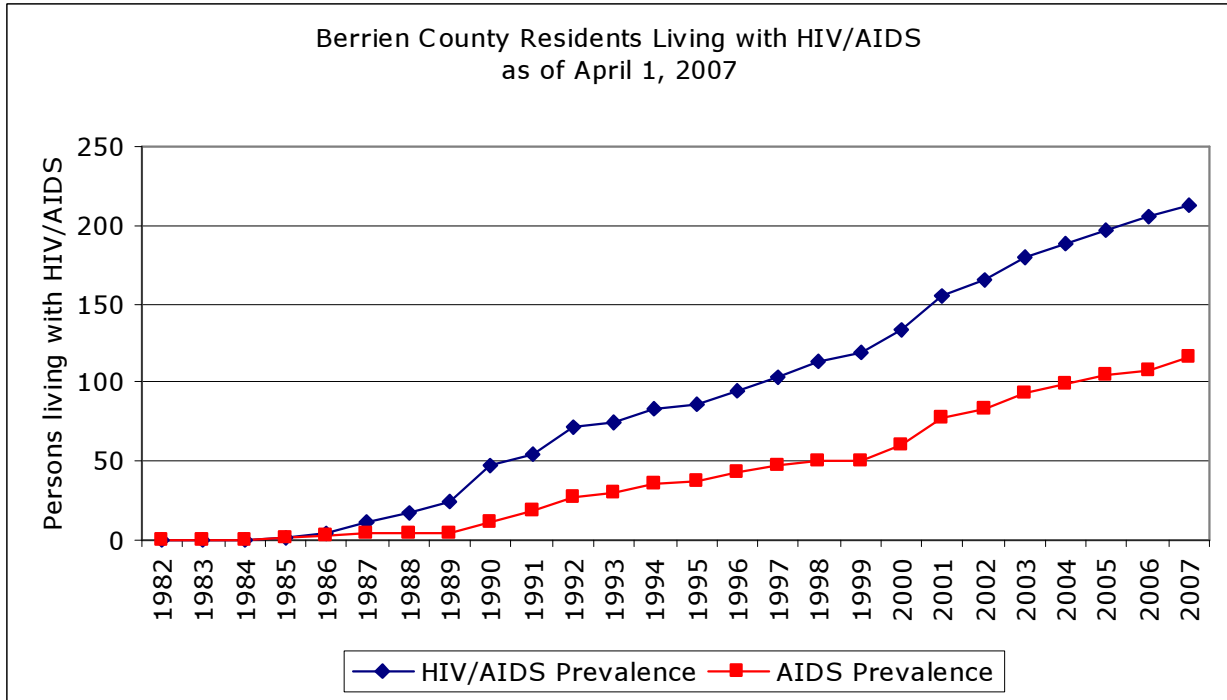


# HIV/AIDS

As of April 1, 2007, there were 212 residents living with HIV or AIDS in Berrien County. Since 2001, the HIV/AIDS prevalence has increased by 36.8% from 155 cases to 212 cases. The incidence of HIV peaked in 2001 with 23 new cases, but has remained steady since then with an average of 15 new cases each year. About half of all AIDS cases in Michigan can be linked to male-to-male sex while males-to-male sex only



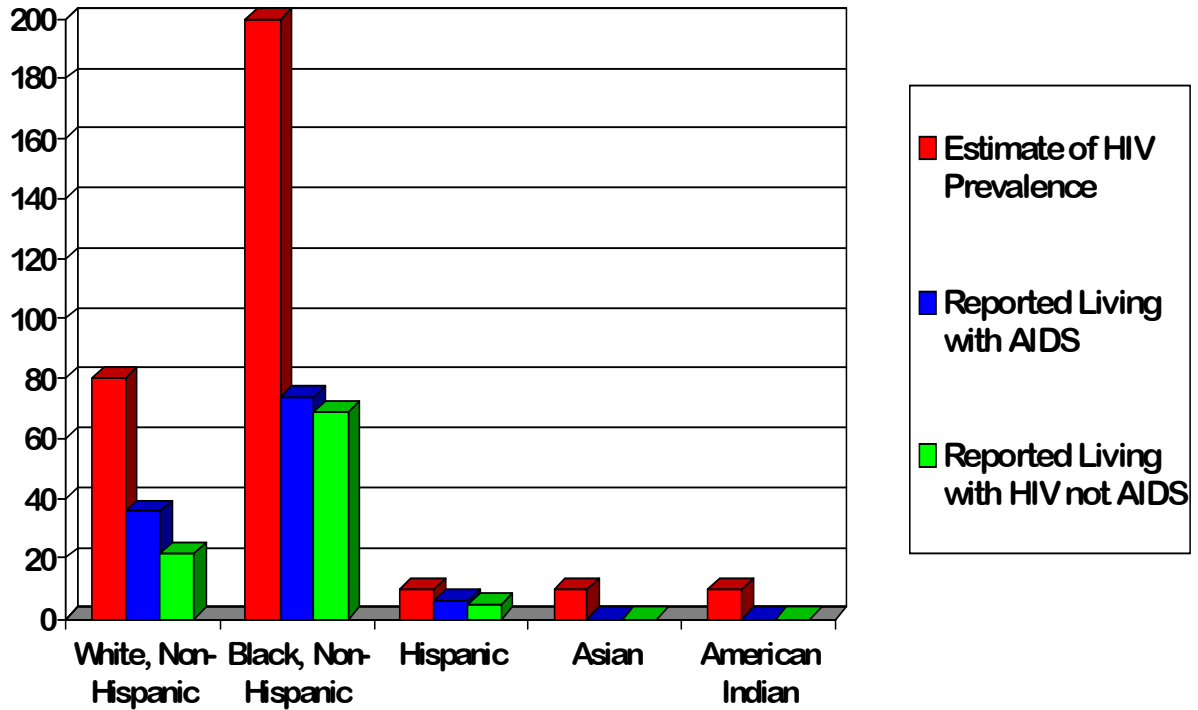
accounts for 21.7% of cases in Berrien County. Black females are disproportionately affected by HIV/AIDS; they represent 84.1% of all female cases and 35.0% of all HIV/AIDS cases in Berrien County. Berrien County has the second highest estimated prevalence rate (184.7 cases per 100,000 residents) in the state behind the City of Detroit (752.7 cases per 100,000 residents). In Berrien County, 36% of HIV/AIDS cases are foreign born compared to 4% for the state of Michigan.



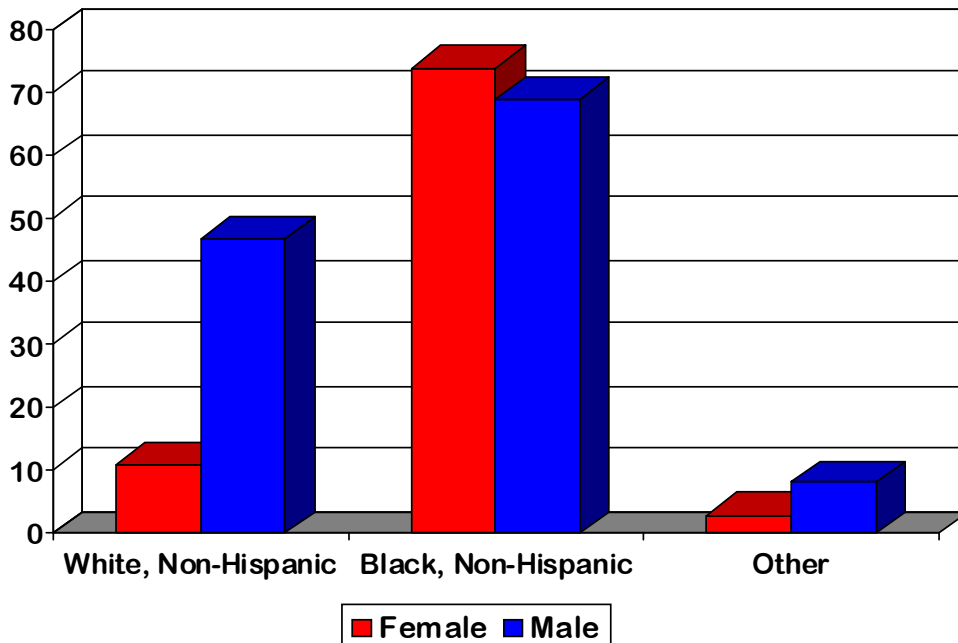
Source: MDCH/HIV/AIDS Surveillance Program

# HIV/AIDS

**Persons living with HIV/AIDS in Berrien County  
by Race and Ethnicity**

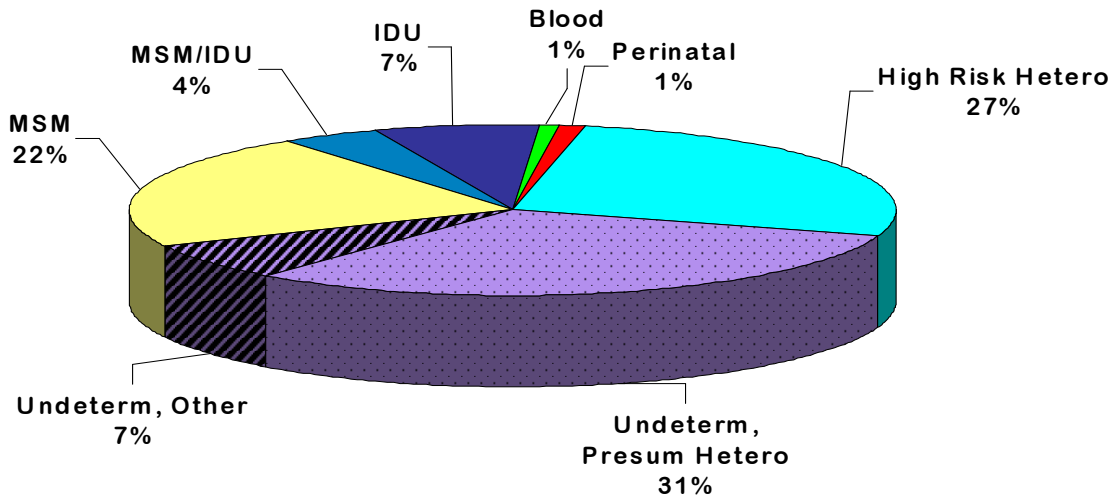


**Persons living with HIV/AIDS in Berrien County  
by Race and Gender**

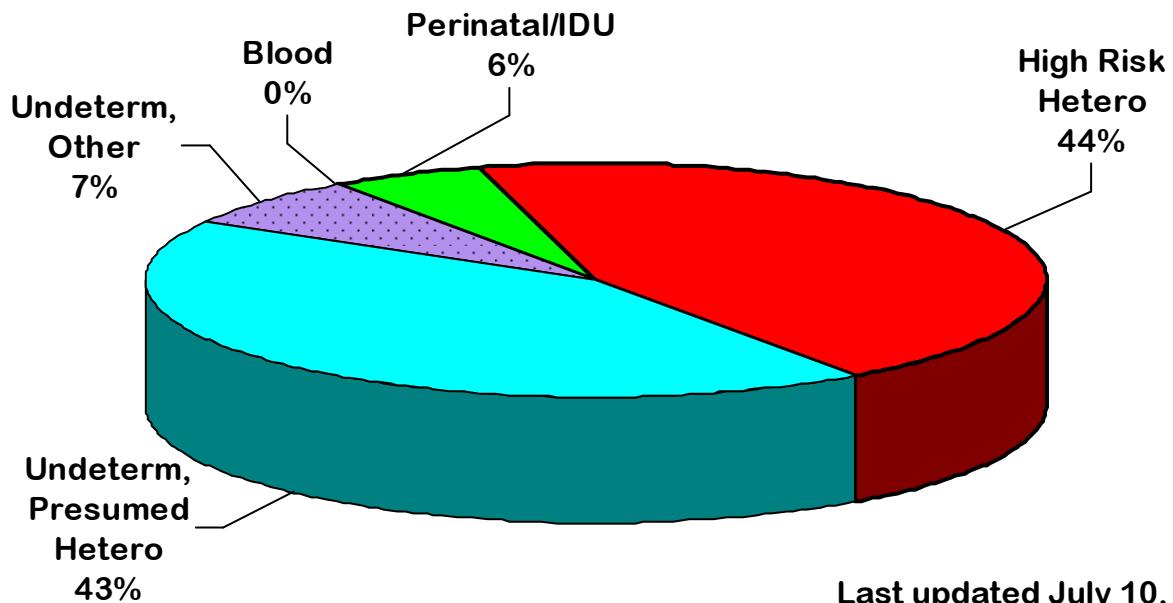


# HIV/AIDS

**Persons Living with HIV/AIDS  
by Mode of Transmission (n=212)  
Berrien County**



**Black Females Living with HIV/AIDS,  
by Mode of Transmission (n =74), Berrien**



Last updated July 10, 2007.

For more information, please contact  
the Epidemiologist at 269-927-5639.