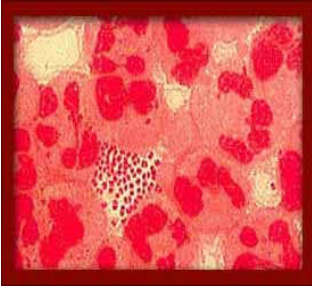
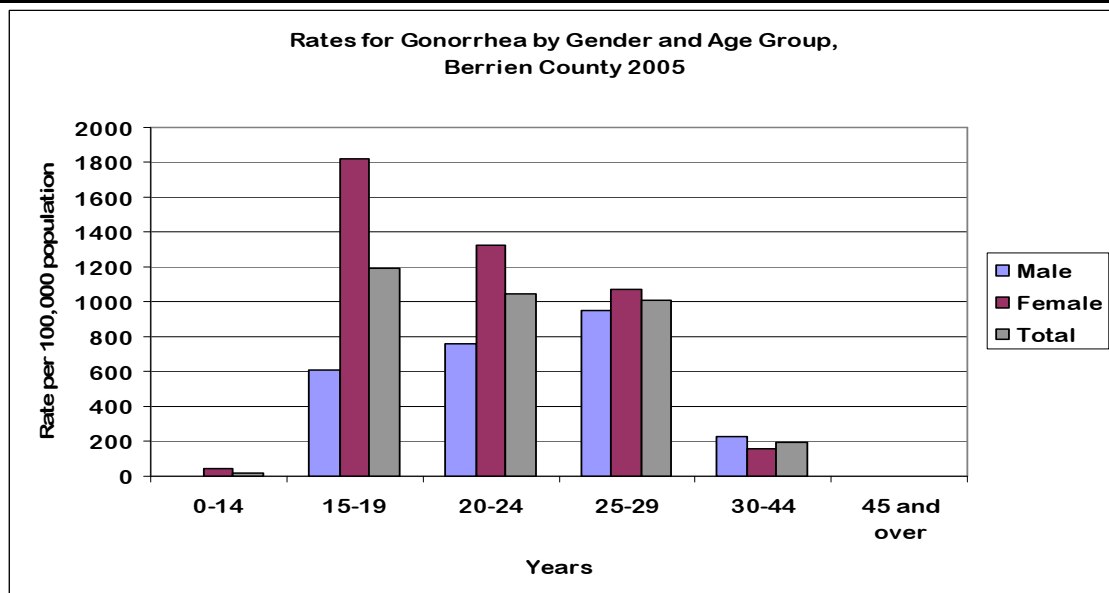


# Gonorrhea



Berrien County ranked ninth in the state of Michigan for number of Gonorrhea infections in 2005. Females had significantly higher rates of Gonorrhea infection than males among all age groups under 30 years; however 15-19 year olds had the highest rate of infection. From October 1, 2005 to October 1, 2006, there were 417 diagnosed Gonorrhea infections in Berrien County; 61.7% of infections occurred in African-Americans.

CASES AND RATES BY GENDER AND AGE GROUP							
Year: 2005							
# of Cases	0-14	15-19	20-24	25-29	30-44	45 and over	Total
Male	0	37	41	40	37	12	167
Female	7	104	74	48	26	2	261
Total	7	141	115	88	63	14	428
% Distribution	0-14	15-19	20-24	25-29	30-44	45 and over	Total
Male	0.00%	8.64%	9.58%	9.35%	8.64%	2.80%	39.02%
Female	1.64%	24.30%	17.29%	11.21%	6.07%	0.47%	60.98%
Total	1.64%	32.94%	26.87%	20.56%	14.72%	3.27%	100.00%
Rate	0-14	15-19	20-24	25-29	30-44	45 and over	Total
Male	N/A	606.2	754.8	945.9	230.3	N/A	211.3
Female	43.8	1815.6	1324.3	1067.4	152.8	N/A	311.8
Total	21.0	1191.7	1043.6	1008.5	190.5	N/A	263.0



Source: Michigan Sexually Transmitted Diseases Database, MDCH

Last updated July 10, 2007.

For more information, please contact the Epidemiologist at 269-927-5639.