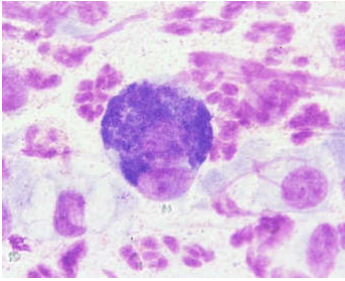
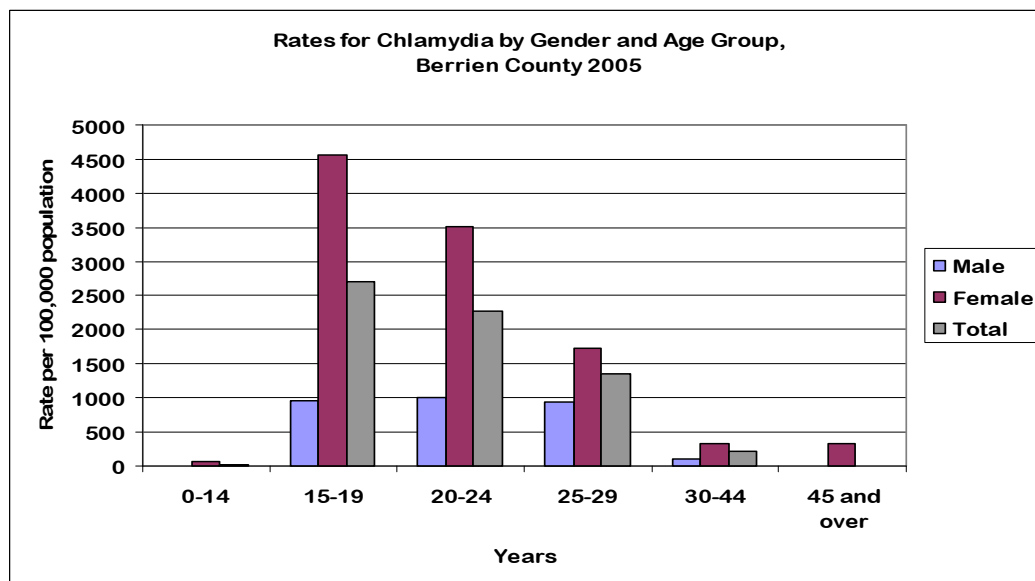


Chlamydia



Berrien County ranked eleventh in the state of Michigan for number of Chlamydia infections in 2005. Females had significantly higher rates of Chlamydia infection than males among all age groups; however 15-19 year olds had the highest rate of infection. From October 1, 2005 to October 1, 2006, there were 838 diagnosed Chlamydia infections in Berrien County; 80.5% of infections occurred in African-Americans.

CASES AND RATES BY GENDER AND AGE GROUP							
Year: 2005							
# of Cases	0-14	15-19	20-24	25-29	30-44	45 and over	Total
Male	1	59	55	40	19	4	178
Female	9	261	196	78	54	4	602
Total	10	320	251	118	73	8	780
% Distribution	0-14	15-19	20-24	25-29	30-44	45 and over	Total
Male	0.13%	7.56%	7.05%	5.13%	2.44%	0.51%	22.82%
Female	1.15%	33.46%	25.13%	10.00%	6.92%	0.51%	77.18%
Total	1.28%	41.03%	32.18%	15.13%	9.36%	1.03%	100.00%
Rate	0-14	15-19	20-24	25-29	30-44	45 and over	Total
Male	N/A	966.6	1012.5	945.9	118.3	N/A	225.2
Female	56.3	4,556.60	3,507.50	1,734.50	317.4	317.4	719.1
Total	30.0	2713.0	2277.7	1352.3	220.7	N/A	479.8



Source: Michigan Sexually Transmitted Diseases Database, MDCH

Last updated July 10, 2007.

For more information, please contact the Epidemiologist at 269-927-5639.